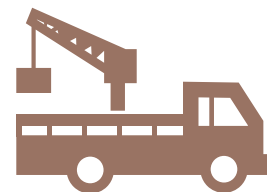


Vehicular Cranes / MKS Baby 1000 / MKS Force 2000

Lightweight Vehicular Cranes, safe and efficient, for the handling of cargo of up to 2000 kg.

MKS BABY 1000**MKS FORCE 2000**



Vehicular Cranes / MKS Baby 1000 / MKS Force 2000

> MKS Marksell

MADE IN BRAZIL, FOR THE WORLD

MKS Marksell is a 100% Brazilian company, a pioneer and leader in the specialised area of transportation of cargo and people.

The company is based in self-owned premises in Itapevi, in the Greater São Paulo region. MKS Marksell relies on a flexible production structure installed in an area of 6000 square meters.

MKS Marksell develops, projects and manufactures, using its own technology, equipment for the transportation of cargo and people, either placed on vehicles or stationary, with a great emphasis on hydroelectric activation.

Apart from developing equipment using state-of-the-art technology, MKS Marksell's main objective is to find solutions for your loading and unloading needs.

We listen to your requirements, and based on our wide experience, identify the practical solutions to allow you to solve your operational problems with a high degree of satisfaction.

We are the only Brazilian company that offers a wide range of equipment which will provide the best solution for your needs. We believe that to show our differentials we must do our best and offer these differentials to our customers, allowing them to make their best choice.

So that all this may become reality, we depend on a team of projects and engineering with wide experience and competence, and on the latest state-of-the-art equipment.

We test exclusively all our equipment so that our customers may have, after taking everything into account, the best cost/benefit ratio and that they can be sure of safe and smooth operations.

Performance of MKS Marksell around the World

MKS Marksell is based in São Paulo – Brazil, but the company is present in many countries around the world, especially in Latin America, Europe and Africa.

> Lightweight Vehicular Cranes, safe and efficient, for the handling of cargo of up to 2000kg.

MKS Marksell has two models of Vehicular Cranes.

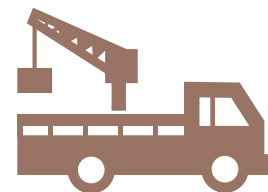
MKS Baby 1000 - It is the most modern solution for moving medium-sized and compact cargos, with hydraulic activation for the telescopic boom.

MKS Force 2000 / MKS Force 2000-L - It is the safest and most efficient alternative for the handling of cargo of up to 2000kg.

> Advantages

- Optimizes the workforce;
- Increases the speed of loading and unloading without putting safety at risk;





Vehicular Cranes / MKS Baby 1000 / MKS Force 2000

> Vehicular Cranes MKS Baby 1000

Perfect for cities where there are restrictions on the traffic of large-sized vehicles.

The Vehicular Cranes **MKS Baby 1000** is the most modern solution for moving medium-sized and compact cargos. It can also be offered in the version **MKS Baby 1000Plus** which has hydraulic activation of the telescopic boom. This equipment can be easily installed in the front part or the rear of the bodies of the vehicles of trucks or pick-ups. Installation can also be made on van type vehicles, trac-

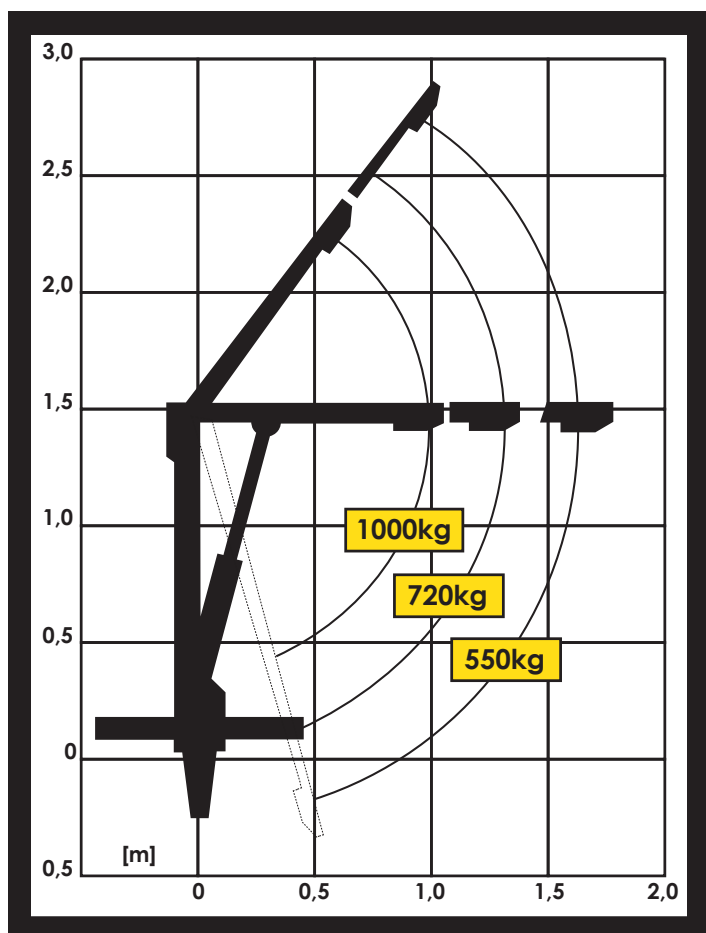
tors, and can also remain stationary.

The standard equipment possesses an operational hydraulic control of two sections or three sections, including a safety valve that makes the unauthorised use of the equipment more difficult. The structure is made from a high resistant special steel and activation is with a set consisting of a hydraulic pump, cardan shaft and power socket.

> The following items are offered as options

- A telescopic stabiliser with manual or hydraulic activation.
- Hydroelectric motor-pump sets; single-phase or three-phase for stationary operations.

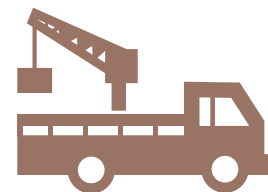
- Special accessories, made to order, to be used in the handling of specific materials.



TECHNICAL SPECIFICATIONS VEHICULAR CRANES - MKS BABY E MKS BABY PLUS

Userfull load moment	1t.m
Cargo Performance X Radius	1000kg a 1000mm
	720kg a 1400mm
	550kg a 1850mm
Horizontal Reach (maximum standart)	1850mm
Vertical Reach (max. standart related to ground)	3750mm
Vertical Reach (max. standart relating to base)	2850mm
Hidr. Course of the Telescopic Boom (MKS Baby Plus)	800mm
Rotating Angle	360 grados
Maximum Elavating Angle of the Boom	50 grados
Height in Position of Transport (related to the base)	1500mm
Weight of the Equipment (basic)	120kg
Weight of the installed Equipment	190kg
Length of the Chain and Hook Set	1000mm
Standart Color	Black MKS

Important: Whatever the model of the body of the vehicle (open, sider or wagon), semi-trailer (carts) or chassis, the platforms can be easily installed requiring only a few minor adjustments at the time of installation.



Vehicular Cranes / MKS Baby 1000 / MKS Force 2000

> Vehicular Cranes MKS Force 2000

Perfect for cities where there are restrictions on the traffic of large-sized vehicles.

The **MKS Force 2000 / MKS Force 2000-L** Vehicular Cranes is the safest and most efficient alternative for handling cargos of up to 2000kg x m in lightweight trucks.

It has a revolutionary concept of installation, and does not require moving or recoiling the body of the vehicle; it can be installed in any position on the body of the vehicle, allowing for more space in the transportation of cargo, as well as a better positioning for loading.

Its reduced own weight of 390kg does not alter the useful cargo capacity of the vehicle.

It can be installed in trucks with a PBT minimum of 4000kg, and can also be placed on tractors, and on van type vehicles, or remain stationary.

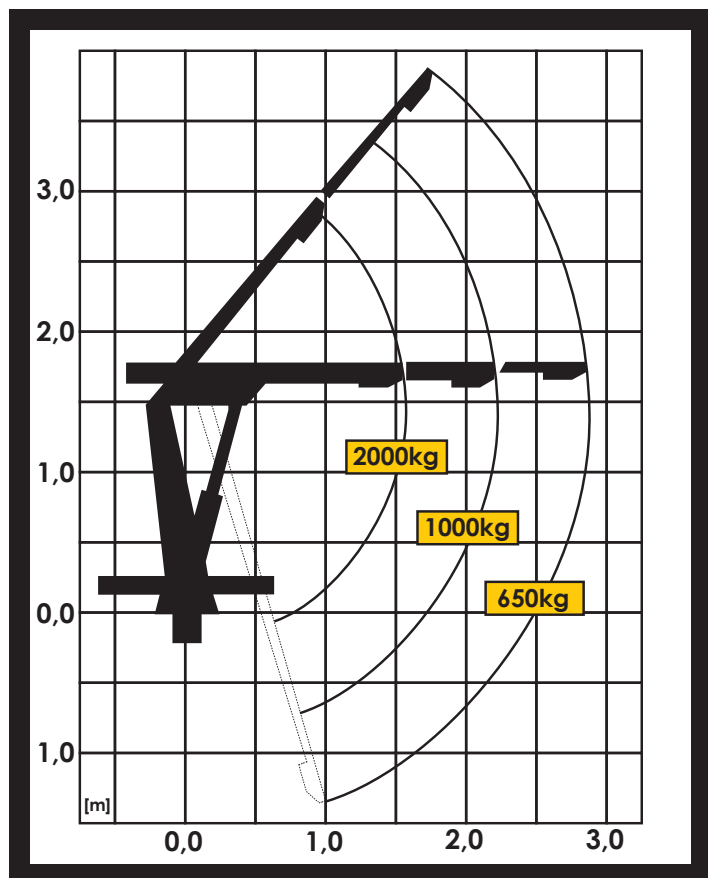
Its functioning is totally hydraulic, and is activated with a hydraulic gear pump, attached on to the power socket (PTO) on the gearstick of the vehicle.

In its standard version, it offers hydraulic activation for the first stage of the telescopic boom; a stabilizer hydraulic cylinder and a hydraulic command of four sections with inbuilt safety valves.

> The following items are offered as options

- Hydroelectric motor-pump sets; single-phase or three-phase for stationary operations.
- Safety valves in all the hydraulic cylinders.

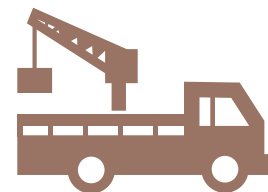
- Special accessories to be used in the handling of specific materials.



TECHNICAL SPECIFICATIONS VEHICULAR CRANES - MKS FORCE 2000

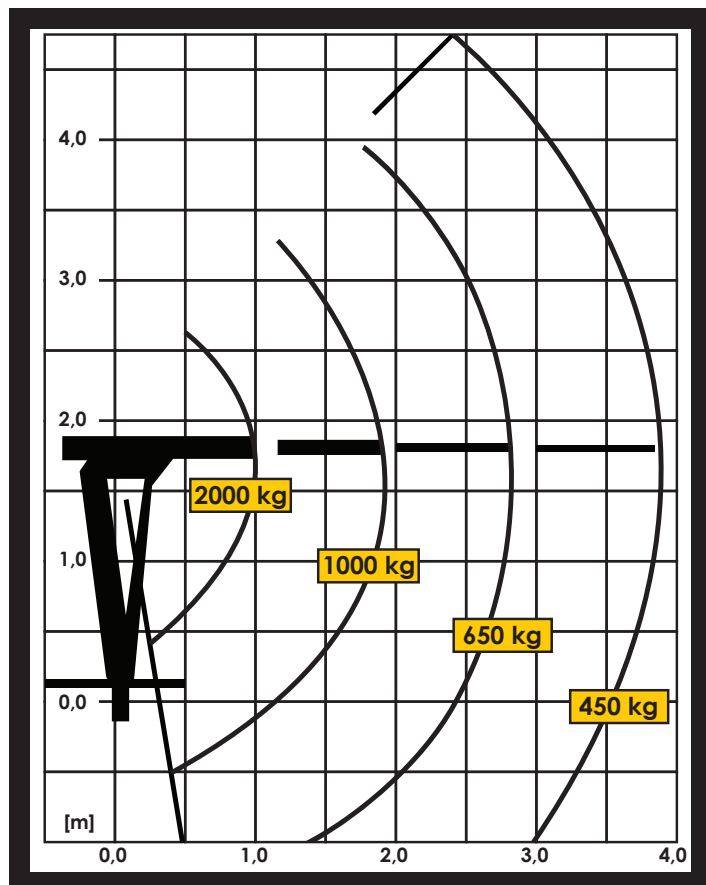
Useful Load Moment	2t.m
Cargo Performance X Radius	2000kg a 1000mm
	1000kg a 1900mm
	650kg a 2850mm
Horizontal Reach (max. standart) MKS Force	2850mm
Vertical Reach (max. standart relating to base)	4000mm
Vertical Reach (max. standart relating to the ground)	4900mm
Rotating Angle	360 degrees
Rotating System	using a ratchet
Height in Position of Transport (relating to the base)	1750mm
Weight of the Equipment (basic)	190kg
Weight of the Installed Equipment	390kg
Standart Color	Red MKS

Important: Whatever the model of the body of the vehicle (open, sider or wagon), semi-trailer (carts) or chassis, the platforms can be easily installed requiring only a few minor adjustments at the time of installation.



Vehicular Cranes / MKS Baby 1000 / MKS Force 2000

> Vehicular Cranes MKS Force 2000-L



TECHNICAL SPECIFICATIONS VEHICULAR CRANES - MKS FORCE 2000-L

Useful Load Moment	2t.m
Cargo Performance X Radius	2000kg a 1000mm
	1000kg a 1900mm
	650kg a 2850mm
	450kg a 3850mm
Horizontal Reach (max. standart) MKS Force-L	3850mm
Vertical Reach (max. standart relating to base)	4760mm
Vertical Reach (max. standart relating to the ground)	5660mm
Rotating Angle	360 degrees
Rotating System	using a ratchet
Height in Position of Transport (relating to the base)	1750mm
Weight of the Equipment (basic)	250kg
Weight of the Installed Equipment	405kg
Standart Color	Red MKS

> More solutions

For Trucks



For various applications (palletised cargos, hand carts, rolltainers and pushcarts), with a cargo capacity of between 400 and 2500kg,

For Passenger Tail Lifts



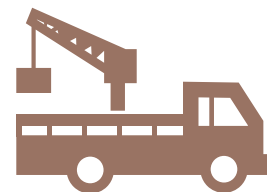
We guarantee accessibility on vehicles, for people that are physically disabled or of reduced mobility in a safe, effective and efficient way!

For Gas Bottle Distribution



If you are looking for equipment that has earned awards and that is tailor made for the distribution of gas bottle, you are in the right place!

Important: Whatever the model of the body of the vehicle (open, sider or wagon), semi-trailer (carts) or chassis, the platforms can be easily installed requiring only a few minor adjustments at the time of installation.



Vehicular Cranes / MKS Baby 1000 / MKS Force 2000

> MKS Baby 1000



> MKS Force 2000 / MKS Force 2000-L



> More on Marksell



THE PREMIUM OIL FOR
YOUR MARKSELL
EQUIPMENT.



ORIGINAL SPARE PARTS
WITH THE BEST PRICES IN
THE MARKET.



ONLY MARKSELL CAN
PROVIDE A 24-HOUR
MAINTENANCE SERVICE.



ADVERTISE YOUR
COMPANY. GET TO
KNOW ADPLAT.

Telephone: +55 11 4772 1100 | 4789 3690
Site: www.marksell.com.br
Email: mks@marksell.com.br

**COMPANY WITH
QUALITY SYSTEM
CERTIFIED BY DNV GL**
= ISO 9001 =

MKS Equipamentos Hidráulicos Ltda
Rua João Dias Ribeiro, 409
Pólo Industrial de Jandira - Itapevi.
CEP 06693-810 - Itapevi - SP - Brazil